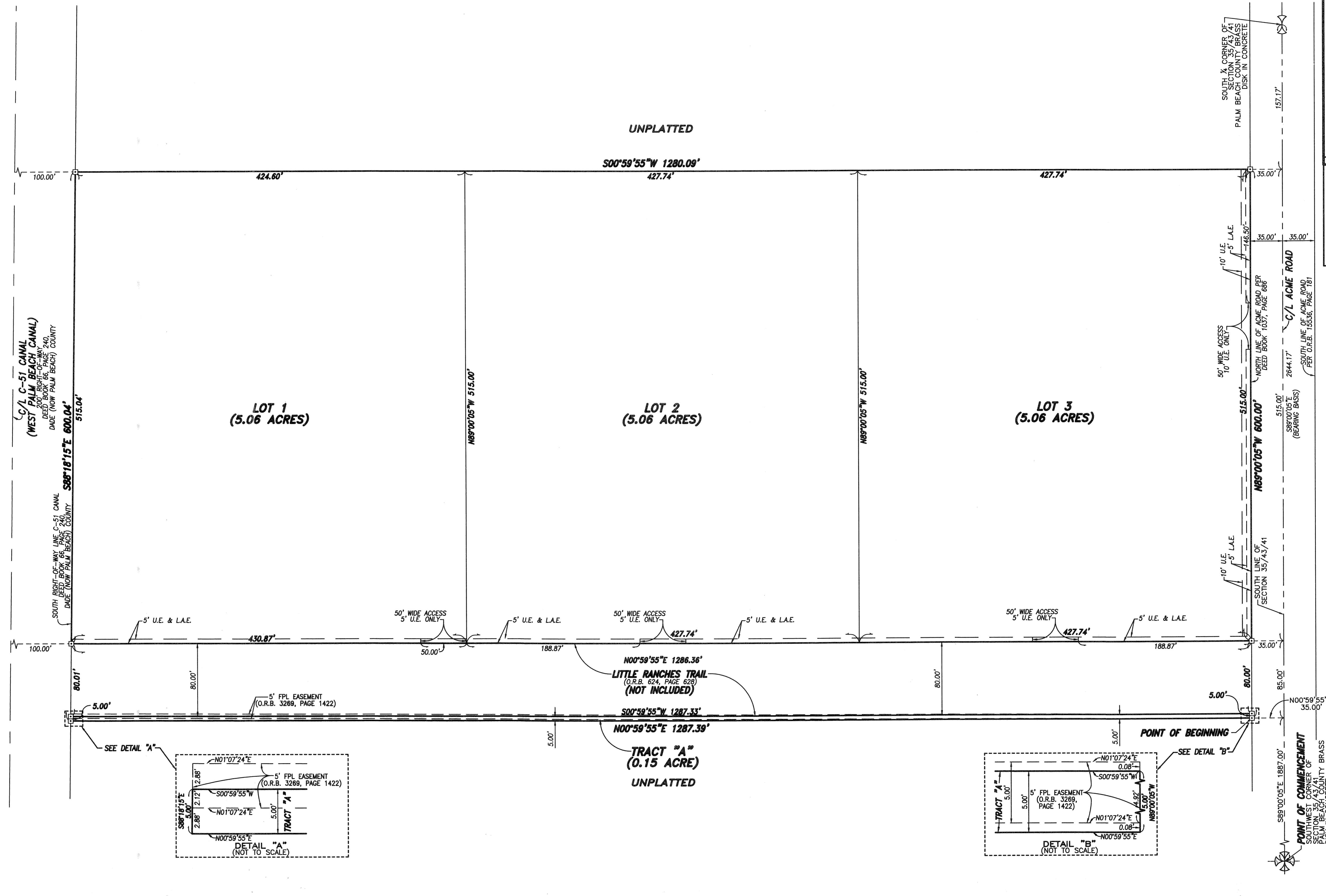
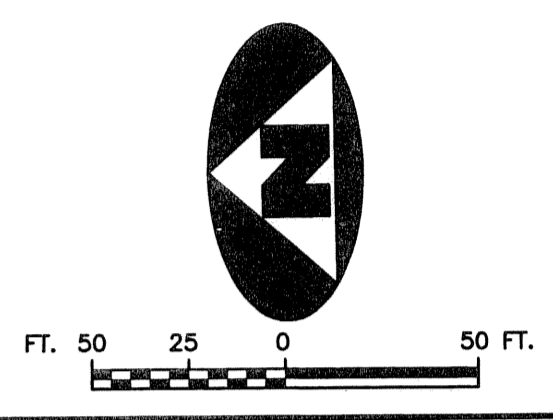


LITTLE RANCHES TRAIL

LYING IN SECTION 35, TOWNSHIP 43 SOUTH, RANGE 41 EAST
VILLAGE OF WELLINGTON, PALM BEACH COUNTY, FLORIDA

126



C/L C-51 CANAL
(WEST PALM BEACH CANAL)
DEED BOOK 66, PAGE 240,
DADE (NOW PALM BEACH) COUNTY

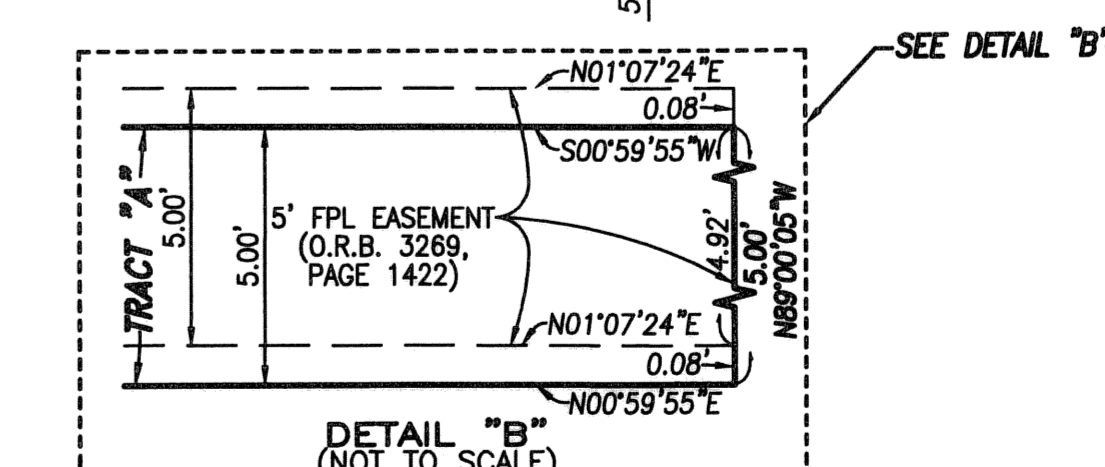
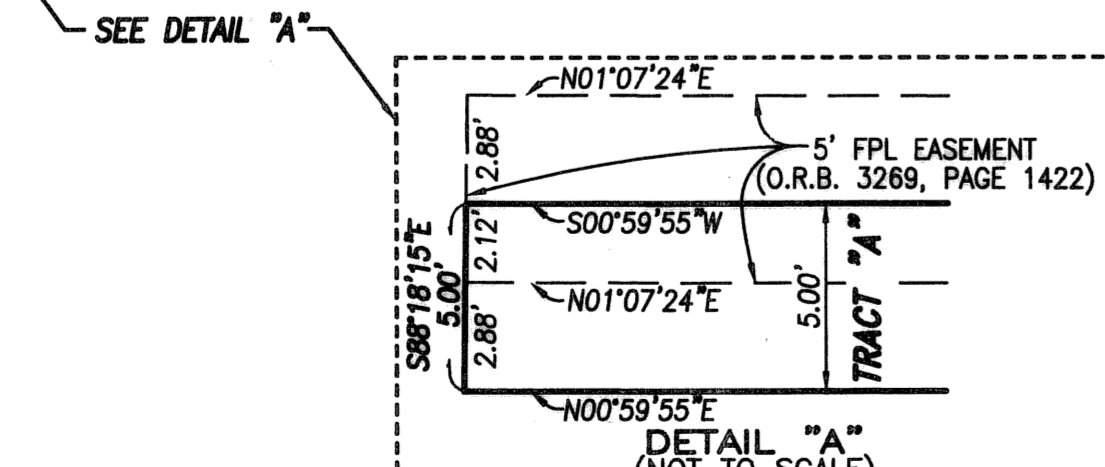
SOUTH RIGHT-OF-WAY LINE C-51 CANAL
DEED BOOK 66, PAGE 240,
DADE (NOW PALM BEACH) COUNTY

SOUTH-Y CORNER OF
SECTION 35, TOWNSHIP 43 SOUTH,
RANGE 41 EAST, PALM BEACH COUNTY
BRASS DISK IN CONCRETE

50' WIDE ACCESS
10' U.E. ONLY

10' U.E. L.A.E.

POINT OF COMMENCEMENT
SOUTHWEST CORNER OF
SECTION 35/43/41
PALM BEACH COUNTY BRASS
DISK IN CONCRETE



LEGEND

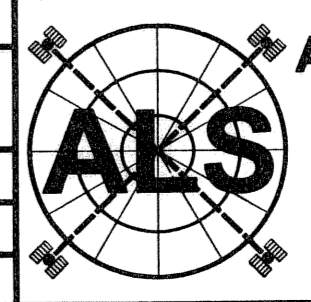
C/L DENOTES A CENTERLINE
L.A.E. DENOTES LIMITED ACCESS EASEMENT
O.R.B. DENOTES OFFICIAL RECORDS BOOK
U.E. DENOTES UTILITY EASEMENT

☐ DENOTES A SET PERMANENT REFERENCE MONUMENT (LB 7344)

SURVEYOR'S NOTES

1. BEARINGS SHOWN HEREON ARE BASED UPON AN ASSUMED BEARING OF S89°00'05"E ALONG THE SOUTH LINE OF SECTION 35, TOWNSHIP 43 SOUTH, RANGE 41 EAST, AS SHOWN HEREON.
2. THIS INSTRUMENT WAS PREPARED BY STEPHEN L. SHIRLEY, P.S.M. NO. 3918, IN AND FOR THE OFFICES OF ASSOCIATED LAND SURVEYORS, INC., 4152 WEST BLUE HERON BOULEVARD, SUITE 121, RIVIERA BEACH, FLORIDA, 33404

FILE: 05-0011PLAT
WO.NO.: 05-0011
SCALE: 1"=50'
DWN: BLS
DATE: 3/30/2005
SHEET 2 OF 2



ASSOCIATED LAND SURVEYORS, INC.
4152 W. BLUE HERON BLVD. SUITE 121
RIVIERA BEACH, FLORIDA 33404
PHONE: (561) 848-2102 FAX: (561) 844-9659
LB NO. 7344 EMAIL: alsurvey@aol.com